

Contrabass

Radio Orfeo

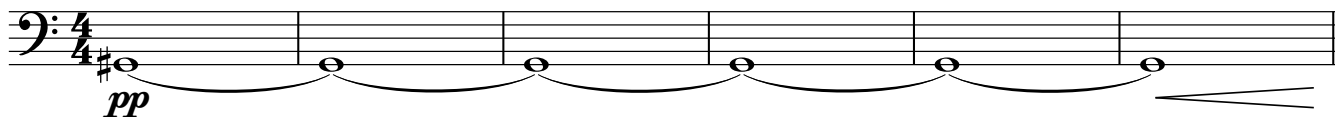
for string orchestra

A

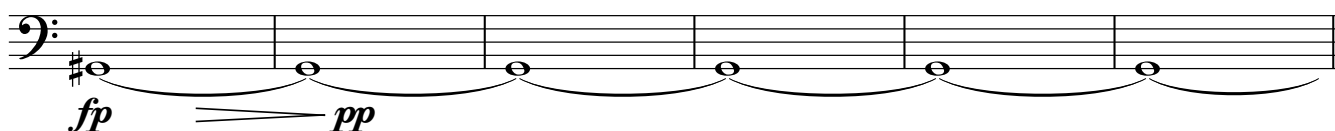
1. Electric Mains Hum (G sharp, c. 50 Hz)

Charlie Barber

♩ = 108



7

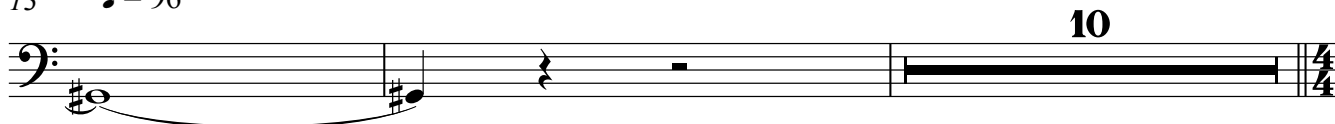


B

2. Tuning to Radio Station, No 1

13

♩ = 96



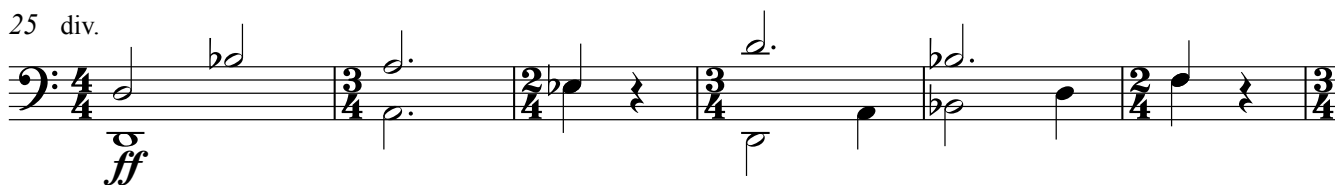
C

3. Radio Message, No 1: "Mirrors would do well to reflect again"

Allegro energico

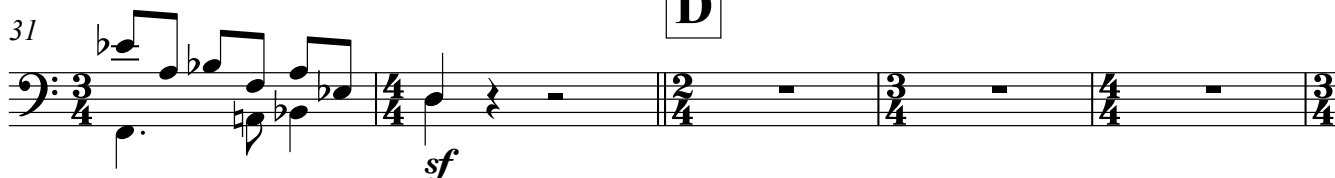
♩ = 120

25 div.



D

31



Radio Orfeo - Charlie Barber

Contrabass

36 unis. *mf* *cresc.* *f* div. *ff*

41 **E** unis. *mf* pizz. *dim.*

48 **F** (pizz.) *mp* arco *f*

55 **G** pizz. *mp* *p* arco *f*

62 **H** *pp*

69

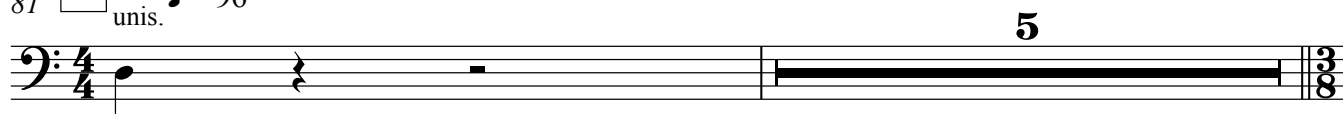
73 **I** div. *ff*

77

Contrabass

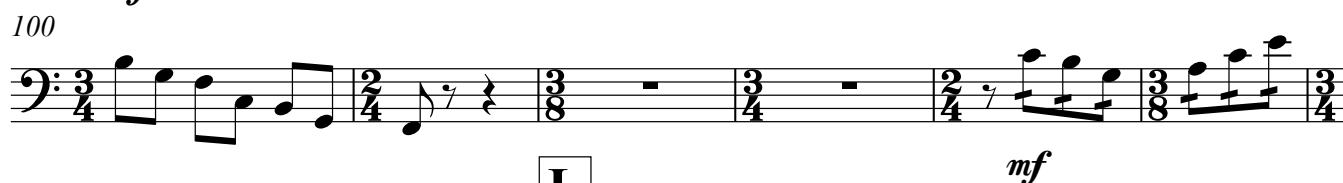
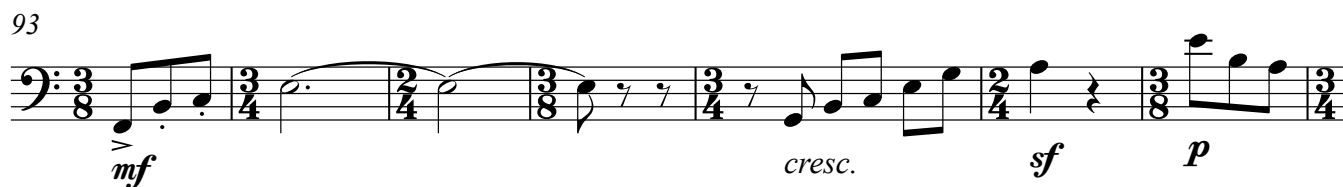
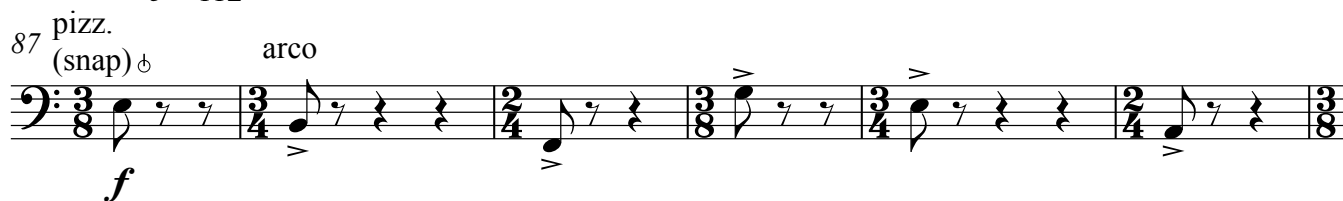
4. Tuning to Radio station, No 2

81 **J** $\text{unis.} \quad \text{♩} = 96$



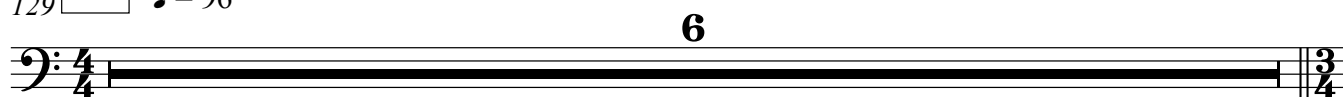
5. Radio Message, No 2: "Jupiter enlightens those he would destroy"

K $\text{♩} = 112$



6. Tuning to Radio station, No 3

129 **M** $\text{♩} = 96$



Contrabass

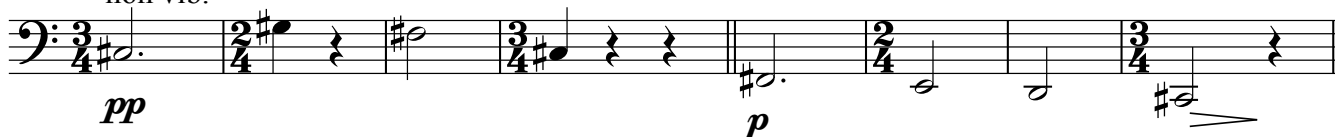
7. Radio Message, No 3: "One glass of water illumines the world"

Tranquillo

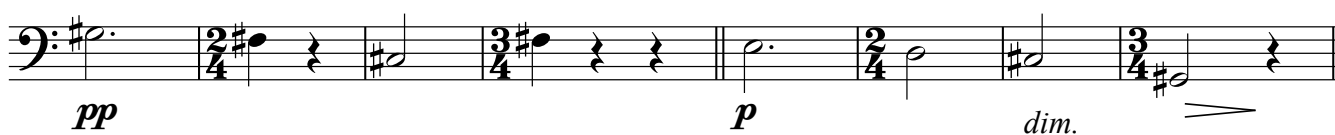
N ♩ = 60

135

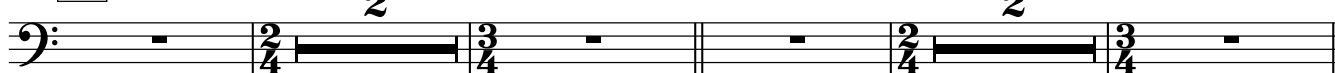
non vib.



143

O

151

P

159

Q

norm.

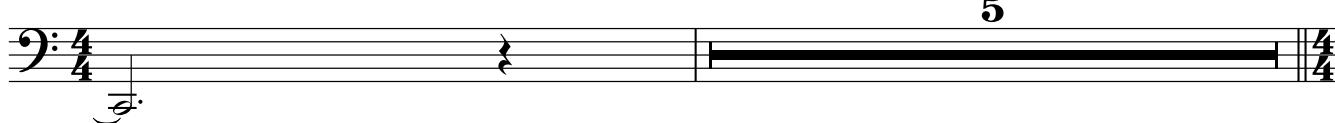


167

R

8. Tuning to Radio station, No 4

♩ = 96



9. Radio Message, No 4: "Silence is twice as fast backwards"

S

Allegro energico

♩ = 120

173 div.



179

T

Contrabass

184 unis. div.
mf *cresc.* *f* *ff*

189 **U** unis. pizz.
mf *dim.*

196 **V** (pizz.) arco
mp *f*

203 **W** pizz. arco
mp *p* *f*

210 **X**
pp

216

221 **Y** div.
ff

225